

## Peran STB Classic (4 mm)



### Description

Peran STB Classic is a hard wearing, decorative resin floor topping made up of colour stable quartz granules encapsulated in a clear resin binder. Peran STB Classic is a hand trowelled system with a matt finish.

### Uses

Ideal for use in public and dry process areas where the floor is subject to heavy traffic, impact and chemical spills.

### Benefits:

- Decorative floor finish
- High scratch resistance
- Easy to clean and maintain
- Excellent wear and impact resistance
- Seamless, hygienic finish
- Abrasion resistant
- High chemical resistance

### Standard colour charts

#### Commercial range



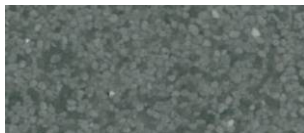
Biscuit 102



Light Grey 701



Beige 101



Mid Grey 702



Grass Green 601



Dark Grey 703



Mid Blue 501

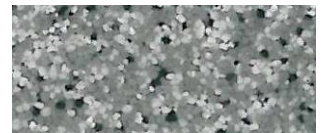


Black 901

#### Industrial range



Red 301



Grey 704



Green 602



Cream 103



Blue 502



Yellow 104

The applied colours may differ slightly from the examples shown above. Contact our customer services for a true colour sample or a special colour match. Special corporate colours and designs can be produced to order (restrictions apply).

## Model Specification

Product: Peran STB Classic

Finish: Matt

Thickness: \_\_\_\_\_mm

Colour: \_\_\_\_\_

Preparatory work and application in accordance with suppliers instructions.

Supplier: Flowcrete UK Ltd

Telephone: Customer Service +44 (0) 1270 753000

## Substrate Requirements

Concrete or screed substrate should be a minimum of 25N/mm<sup>2</sup>, free from laitance, dust and other contamination. The substrate should be dry to 75% RH as per BS 8204 and free from rising damp and ground water pressure. If no damp proof membrane is present Hydraseal DPM can be incorporated directly beneath the Peran STB system.

## Products Included in this System

### Classic (for 4 mm)

Primer: Peran STC	@ 0.25 kg/m <sup>2</sup>
Scatter: Coloured Quartz Size 7/8	@ 0.50 kg/m <sup>2</sup>
Topping: Peran STC (as binder) mixed with Coloured Quartz Size 7/8	@ 0.80 kg/m <sup>2</sup>  @ 6.60 kg/m <sup>2</sup>
Sealer: Peran TCW (in one or two coats)	@ 0.80 kg/m <sup>2</sup>
and Flowseal PU Matt	@ 0.08 kg/m <sup>2</sup>

Detailed application instructions are available upon request.

## Installation Service

The installation should be carried out by a Flowcrete approved contractor with a documented quality assurance scheme.

Obtain details of our approved contractors by contacting our customer service team or enquiring via our web site.

[www.flowcrete.co.uk](http://www.flowcrete.co.uk)

## Note

No resin system is totally colour fast and may change colour over time (exhibits a yellowing effect). Colour change depends on the UV light and heat levels present and hence the rate of change cannot be predicted. This is more noticeable in very light colours but does not compromise the product's physical or chemical resistance characteristics. We have endeavoured to adopt colours within our standard range which minimise this change.

Intensively coloured products (e.g. hair colorants, medical disinfectants etc.) and plasticizer migration (e.g. from rubber tyres) can lead to irreversible discoloration in the surface. Please contact our Technical Services Department for further advice.

## Environmental considerations

The finished system is assessed as non-hazardous to health and the environment. The long service life and seamless surface reduce the need for repairs, maintenance and cleaning. Environmental and health considerations are controlled during manufacture and application of the products by Flowcrete staff and fully trained and experienced contractors.

## Technical Information

The figures that follow are typical properties achieved in laboratory tests at 20 °C and at 50% Relative Humidity.

Reaction to fire	B <sub>FL</sub> -s1	EN 13501-1
Impact Resistance	15 Nm	EN ISO 6272
Wear Resistance	Abrasion quantity 1 cm <sup>3</sup>	EN 13892-5
Bond Strength	> 2.5 N/mm <sup>2</sup>	EN 13892-8
Compressive Strength	>40 N/mm <sup>2</sup>	EN 13892-2
Flexural Strength	15 N/mm <sup>2</sup>	EN 13892-2
Tensile Strength	10 N/mm <sup>2</sup>	BS 6319-7
Temperature Resistance	Tolerant of sustained temperatures up to 50 °C	
Water Permeability	Nil - Karsten test. (impermeable)	
Vapour Permeability	1.36g / m <sup>2</sup> /mm/24hrs ASTM E96:90	
Chemical Resistance	Contact Technical Department Good resistance to tea, coffee, cola, fruit juice, soaps and bleach	
Slip Resistance	Dry >40 low slip potential Method described in BS 7976-2 (in accordance with HSE and UKSRG guidelines) (typical values for 4-S rubber slider)	

The slipperiness of flooring materials can change significantly, due to the installation process, after short periods of use, due to inappropriate maintenance, longer-term wear and/ or surface contaminants (wet or dry).

Textured systems are recommended to meet slip resistance value requirements for wet conditions and/ or surface contaminants (wet or dry) - please contact our Technical Advisors for further details and specifications.

Complies with FeRFA category 6.

## Speed of Cure

	10 °C	20 °C	30 °C
Light traffic	36 hrs	24 hrs	16 hrs
Full traffic	72 hrs	48 hrs	48 hrs
Full chemical cure	12 days	7 days	7 days

## Aftercare - Cleaning and Maintenance

Clean regularly using a single or double headed rotary scrubber drier in conjunction with a mildly alkaline detergent.

## Important Notes

Flowcrete's products are guaranteed against defective materials and manufacture and are sold subject to its standard Terms and Conditions of Sale, copies of which can be obtained on request.

Any suggested practices or installation specifications for the composite floor or wall system (as opposed to individual product performance specifications) included in this communication (or any other) from Flowcrete UK Ltd constitute potential options only and do not constitute nor replace professional advice in such regard. Flowcrete UK Ltd recommends any customer seek independent advice from a qualified consultant prior to reaching any decision on design, installation or otherwise.